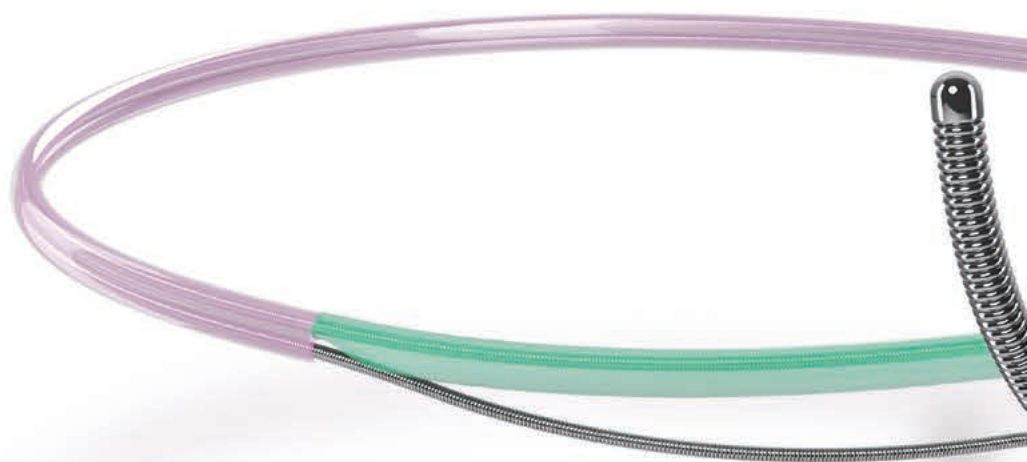


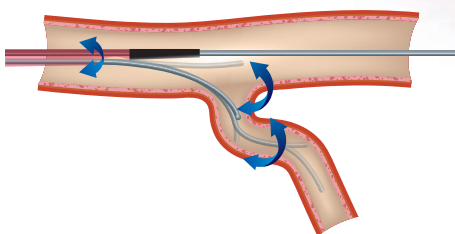
ASAHI SASUKE

ASAHI SASUKE

Stability — Real Value to Your Procedure

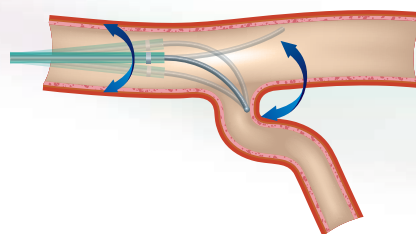


While using ASAHI SASUKE



Catheter is stabilized by the RX lumen guide wire which results in an anchor effect.

While using general microcatheter



Catheter moves due to the guide wire manipulation.

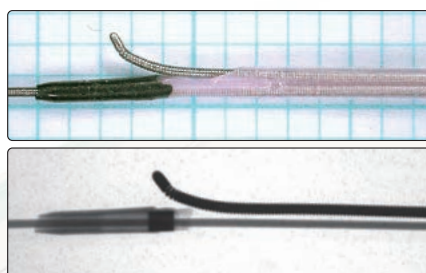
The above data was obtained by company standardized test, which may differ from industry standardized tests.
The above data does not prove that all devices have exactly the same performance with the samples used for these tests.

ASAHI SASUKE's 3 original technologies giving stability and greater certainty for PCI

1

Tapered soft tip

- Incorporates the same tapered soft tip used in ASAHI Corsair/ASAHI Caravel to maintain trackability in tortuous vessels.
- Precise, reliable guide wire control and easy recognition of the guide wire from OTW lumen exit port.



vieno ir dviej spindži modeliai; dviej spindži modelio OTW spindis atsiveria ne toliau, nei 7 mm nuo galiuko;

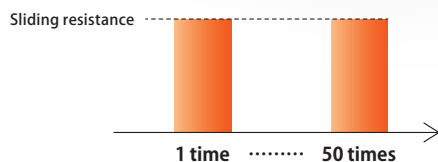
2

Double stainless steel core

Double stainless steel core in proximal shaft ensure kink resistance.

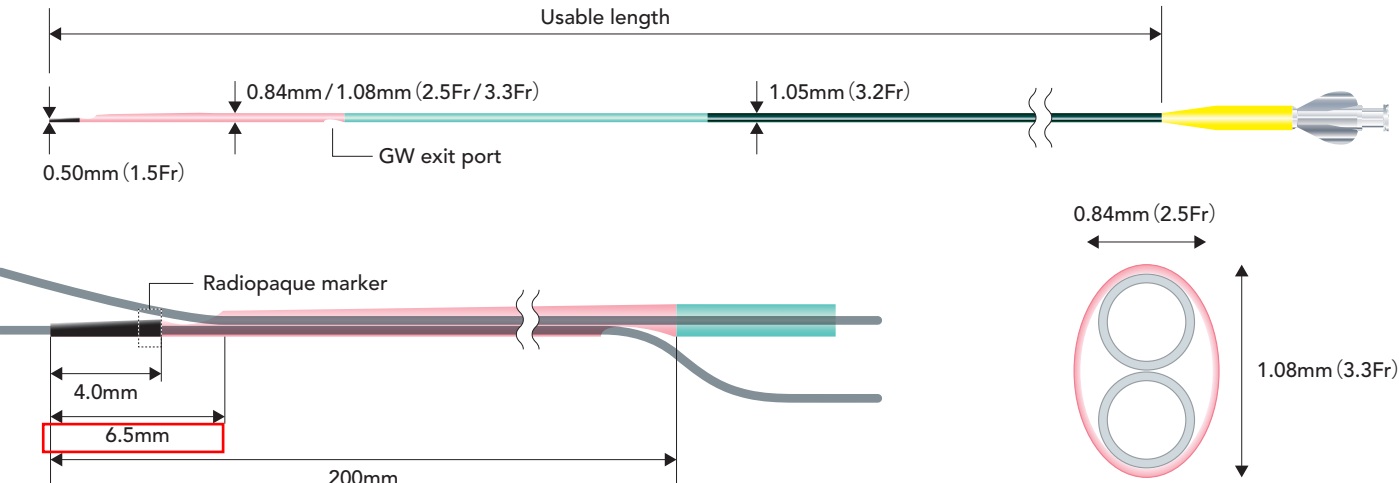
3

L³ coat (Long-Lasting Lubricity coat)



Bench tests show ASAHI SASUKE retains the same lubricity even after 50 times in our lubricity testing.

Structure & ordering information



OTW spindis atsiveria ne toliau, nei 7 mm nuo galiuko

Product	Catalog No.	Outer diameter			Inner diameter		Usable length	Recommended guide wire	Hydrophilic coating length
		Tip	Distal shaft	Proximal shaft	Tip	Shaft			
ASAHI SASUKE	SA145-33N	0.50mm (1.5Fr)	0.84mm/1.08mm (2.5Fr/3.3Fr)	1.05mm (3.2Fr)	0.40mm (0.016inch)	0.43mm (0.017inch)	145cm	0.36mm (0.014inch)	38cm



© 2017 ASAHI INTECC CO., LTD.
"ASAHI", "Corsair", "Caravel" and "SASUKE" are trademarks or registered trademarks of ASAHI INTECC CO., LTD. in Japan and other countries.

Manufactured by:

Distributed by:



ASAHI INTECC CO.,LTD.
3-100 Akatsuki-cho, Seto, Aichi 489-0071 Japan
Contact phone number: +81-561-86-9101
<http://www.asahi-intecc.com>